

The background features a large, faint, circular seal of the Arkansas State Highway Commission. The seal contains the text "ARKANSAS STATE HIGHWAY COMMISSION" around the perimeter and a central emblem with a star and other symbols.

Arkansas State Highway Commission Meeting

Wednesday, July 23, 2014



Item 1
**Military Order of the
Purple Heart
Presentation**







PURPLE HEART TRAIL



2014



**KEEP
ARKANSAS
BEAUTIFUL**

Item 2

Keep Arkansas Beautiful Presentation

**By: Robert Phelps
Executive Director**

The background of the slide features a large, faint, circular seal of the Arkansas State Highway Commission. The seal contains the text "SEAL OF ARKANSAS STATE HIGHWAY COMMISSION" around the perimeter and a central emblem with a shield and stars.

Item 3

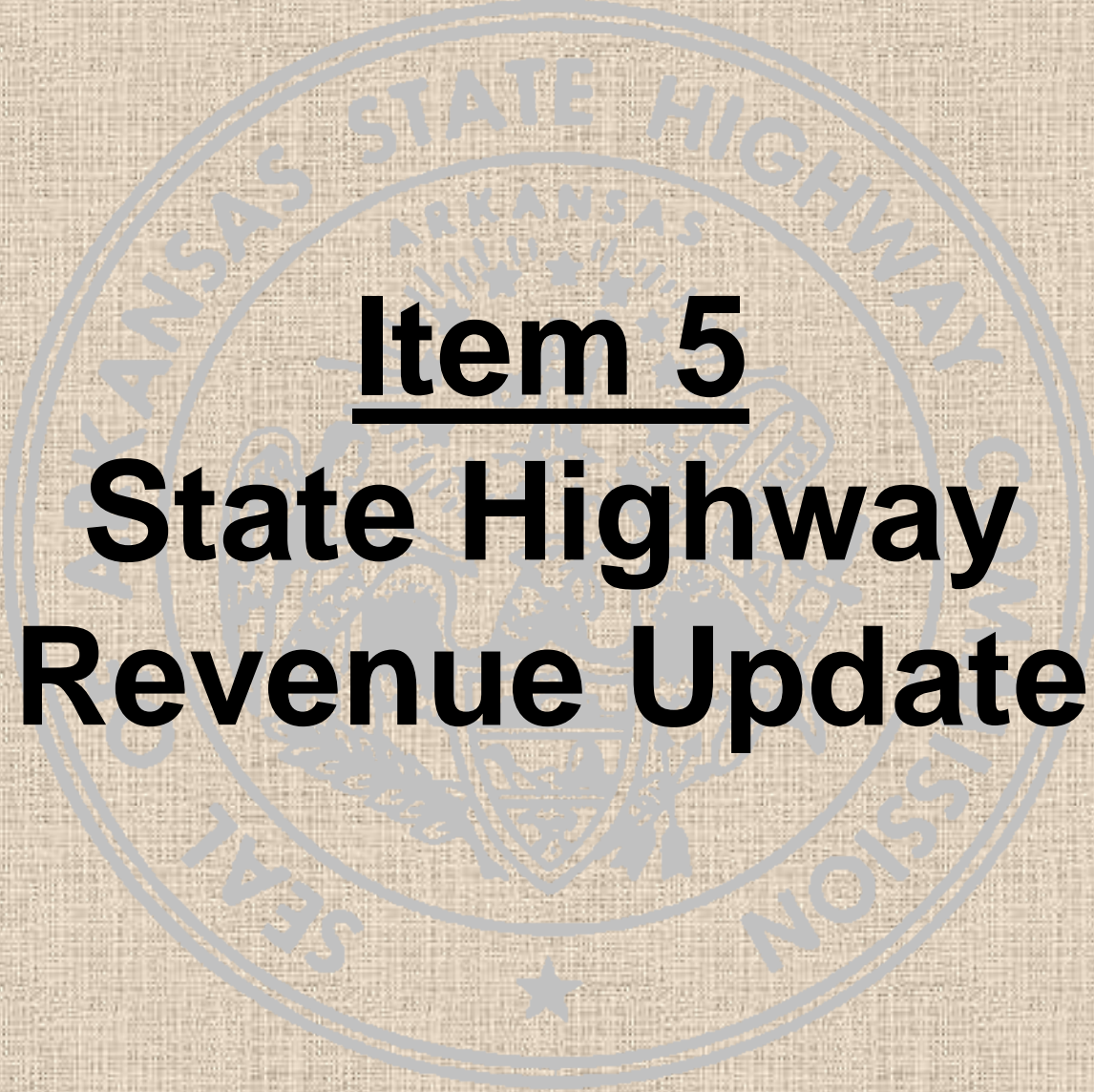
Minutes

June 4, 2014 Meeting

The background of the slide features a large, faint, circular seal of the Arkansas State Highway Commission. The seal contains the text "ARKANSAS STATE HIGHWAY COMMISSION" around the perimeter and a central emblem with a shield and a star.

Item 4

**Consideration of
Minute Orders**



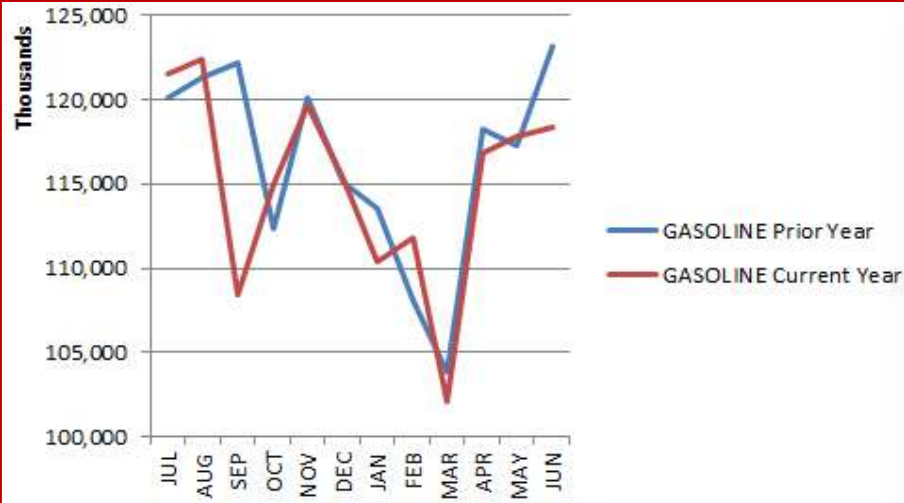
Item 5
**State Highway
Revenue Update**

June 2014 Revenues and Consumption

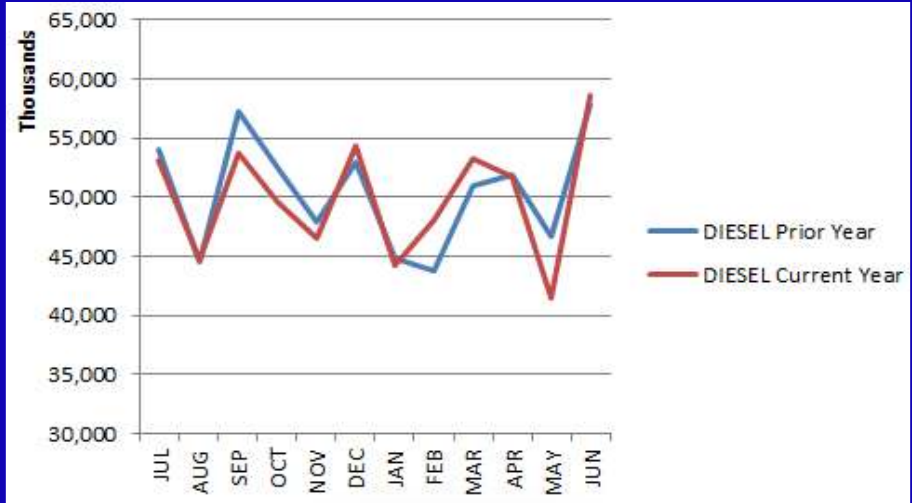
July - June	FY 2013	FY 2014	Variance	% Change
Motor Fuels Tax	\$271.4	\$265.7	(\$5.7)	-2.1%
Registration Fees	\$83.0	\$84.8	\$1.8	2.2%
Permits & Penalties	\$17.4	\$17.4	\$0.0	0.0%
Other	\$7.9	\$5.7	(\$2.2)	-27.9%
Total User Revenues	\$379.7	\$373.6	(\$6.1)	-1.6%
Natural Gas Severance Tax	\$32.3	\$48.8	\$16.5	51.1%
RRA Interest	\$3.3	\$3.4	\$0.1	3.0%
Less: Diesel Tax for Bonds	(\$16.5)	(\$16.2)	\$0.3	-1.8%
Total Revenues Available	\$398.8	\$409.6	\$10.8	2.7%
Fiscal 2014 Projected vs. Actual July - June	Budget (millions)	Actual (millions)	Variance (millions)	% Variance
Motor Fuels Tax	\$261.8	\$265.7	\$3.9	1.5%
Registration Fees	\$83.6	\$84.8	\$1.2	1.4%
Permits & Penalties	\$18.4	\$17.4	(\$1.0)	-5.4%
Other	\$5.3	\$5.7	\$0.4	7.6%
Total User Revenues	\$369.1	\$373.6	\$4.5	1.2%
Natural Gas Severance Tax	\$37.5	\$48.8	\$11.3	30.1%
RRA Interest	\$2.4	\$3.4	\$1.0	41.7%
Less: Diesel Tax for Bonds	(\$17.0)	(\$16.2)	\$0.8	-4.7%
Total Revenues Available	\$392.0	\$409.6	\$17.6	4.5%
Fuel Consumption in Gallons July – June	FY 2013 (millions)	FY 2014 (millions)	Difference (millions)	% Change
Gasoline	1,395.3	1,379.7	-15.6	-1.1%
Diesel	605.1	599.3	-5.8	-1.0%
Total	2,000.4	1,979.0	-21.4	-1.1%

Fuel Consumption

May 2013 – April 2014



Gasoline



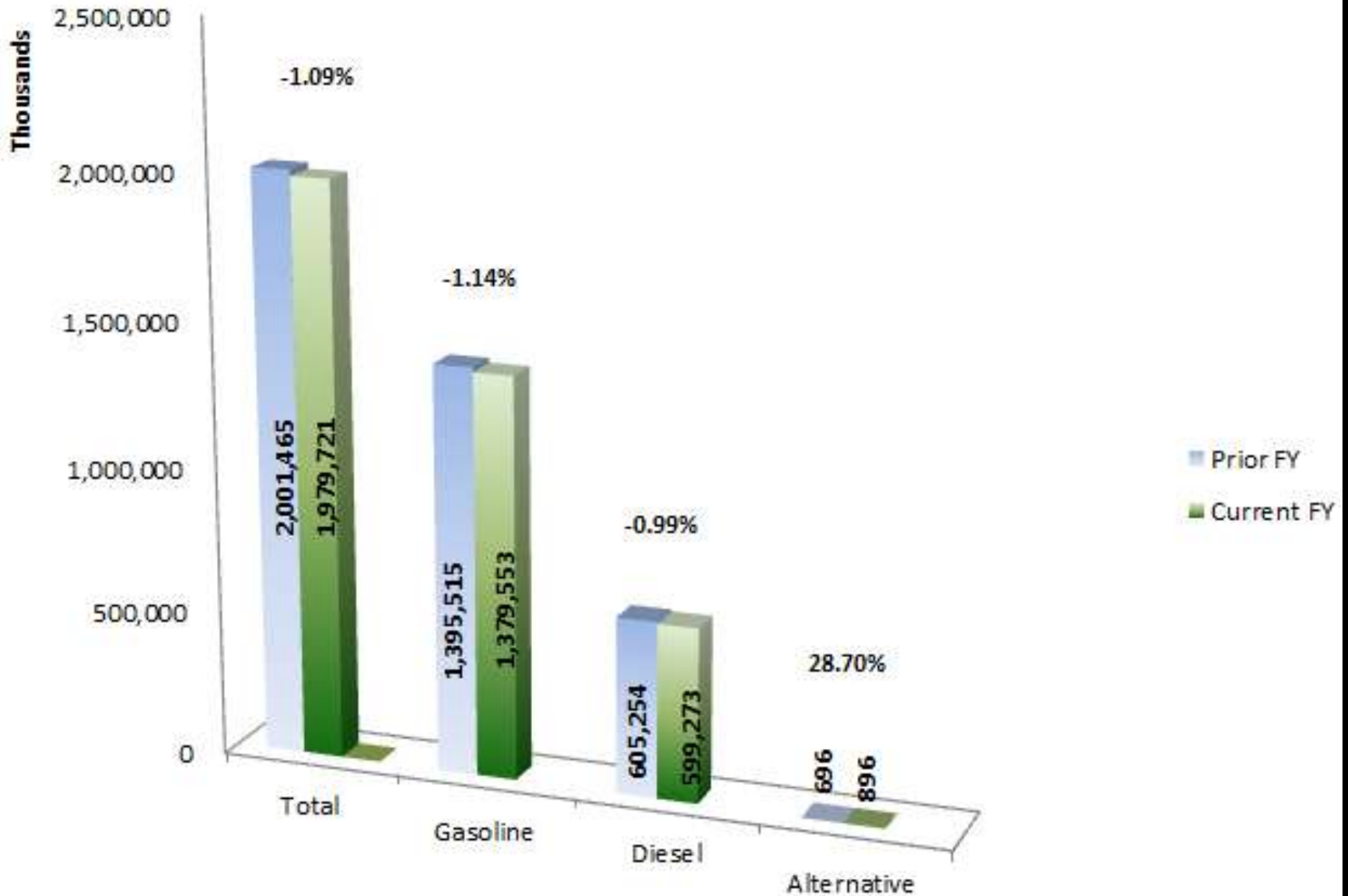
Diesel



Alternative

Total Fuel Consumption

Gallons



Projected Sales Tax vs. Actual

Month	Projected Net	Actual Receipts	Variance	Monthly Variance	Annual Variance
Jul	\$5,950,000.00	\$6,205,659.77	\$255,659.77	4.30%	4.30%
Aug	\$13,930,000.00	\$12,923,708.99	\$(1,006,291.01)	-7.22%	-3.78%
Sept	\$13,860,000.00	\$13,462,454.84	\$(397,545.16)	-2.87%	-11.47%
Oct	\$13,300,000.00	\$12,587,677.76	\$(712,322.24)	-5.36%	-8.23%
Nov	\$13,160,000.00	\$12,803,477.88	\$(356,522.12)	-2.71%	-6.43%
Dec	\$13,860,000.00	\$13,833,985.52	\$(26,014.48)	-0.19%	-5.22%
Jan	\$13,860,000.00	\$13,275,291.84	\$(584,708.16)	-4.22%	-4.40%
Feb	\$13,230,000.00	\$12,215,268.47	\$(1,014,731.53)	-7.67%	-3.83%
Mar	\$13,300,000.00	\$13,616,161.92	\$316,161.92	2.38%	-3.38%
Apr	\$13,650,000.00	\$13,307,092.79	\$(342,907.21)	-2.51%	-3.02%
May	\$13,790,000.00	\$13,313,604.47	\$(476,395.53)	-3.45%	-3.06%
Jun	\$13,930,000.00	\$13,708,810.25	\$(221,189.75)	-1.59%	-2.93%
Total	\$155,820,000.00	\$151,253,194.50	\$(4,566,805.50)		

2014-2015 Projected Sales Tax

Month	Projected Net	Actual Receipts	Variance	Monthly Variance	Annual Variance
Jul	\$13,230,000.00				
Aug	\$13,230,000.00				
Sept	\$13,790,000.00				
Oct	\$12,880,000.00				
Nov	\$13,090,000.00				
Dec	\$14,140,000.00				
Jan	\$13,580,000.00				
Feb	\$12,530,000.00				
Mar	\$13,930,000.00				
Apr	\$13,930,000.00				
May	\$14,140,000.00				
Jun	\$14,210,000.00				
Total	\$162,680,000.00				

The background features a large, faint, circular seal of the Arkansas State Highway & Transportation Commission. The seal contains the text "ARKANSAS STATE HIGHWAY & TRANSPORTATION COMMISSION" around the perimeter and a central emblem with a star and the word "ARKANSAS".

Item 6

Status of Federal Highway & Transit Funding Issues



Current Legislation

- **Moving Ahead for Progress in the 21st Century (MAP-21)**
 - Effective through September 30, 2014
 - Expires in approximately 2 Months



Reauthorization Legislation



- \$302 Billion
- Funding for Repatriation of Corporate Funds
- Allowed to Toll

• Senate's "AP-21 Reauthorization Act"

- \$265 Billion over years
- Funding Unknown
- No Provision for Tolling

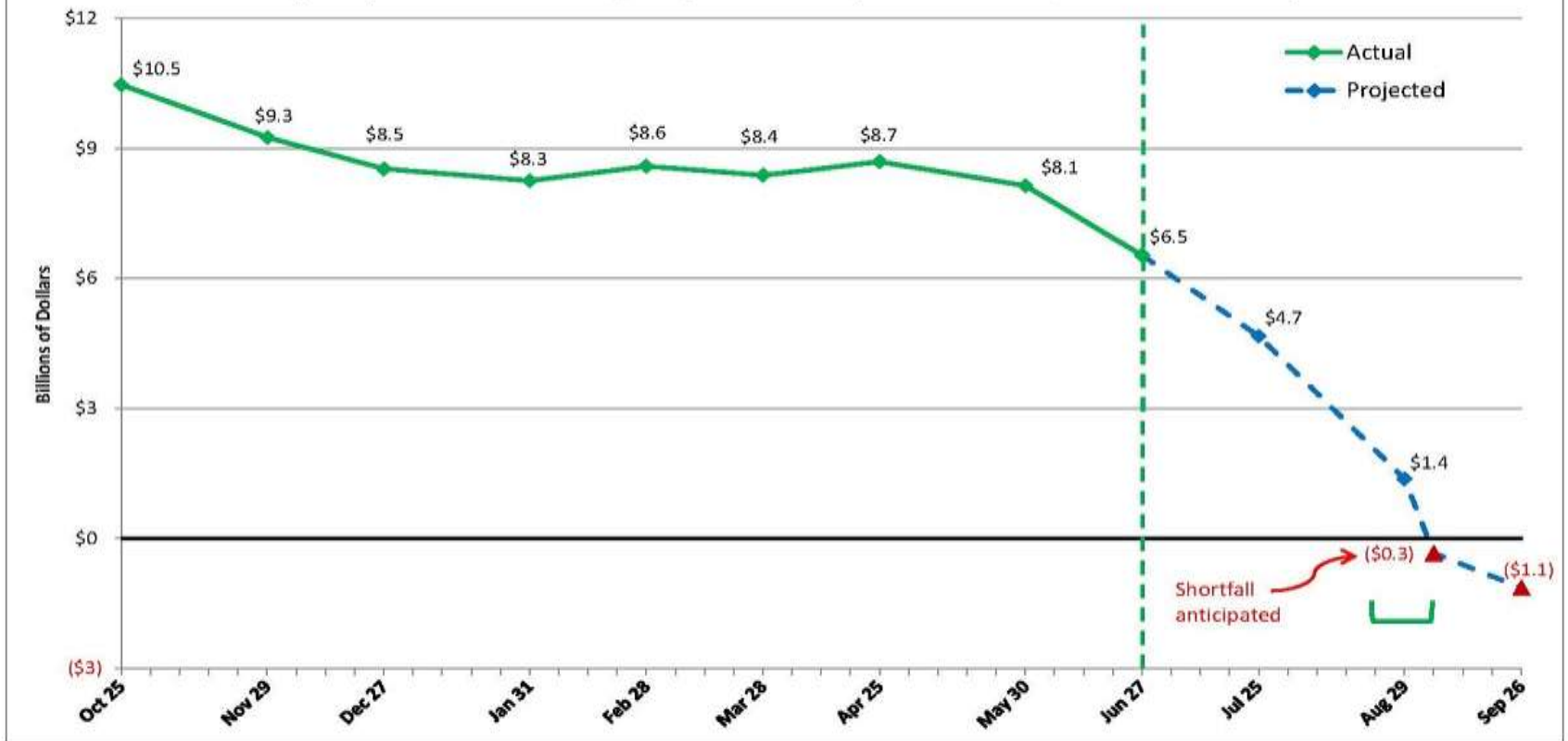
• House - No Reauthorization Bill Released



Federal Highway Trust Fund

FY 2014 Projected Estimates for End-of-Month Cash Balances (as of 6/27/2014) ^{1/ 2/ 3/}

Highway Account of the Highway Trust Fund (Includes FHWA, FMCSA & NHTSA)



1/ Graph reflects actual data through 6/27/14 and end-of-month projections for the remainder of the fiscal year.

2/ Total receipt and outlay projections are based on FY 2015 Mid-Session Review assumptions. Projected monthly receipt and outlay rates are based on historic averages.

3/ Range of anticipated shortfall: Green brackets denote the estimated window of when the anticipated shortfall will occur.

Source: FHWA

Federal Highway Trust Fund

- **July 1:** Federal Highway Administration Memorandum – Procedures for Cash Management Procedures
- **August 1:** Cash Management Procedures to be Implemented by the Federal Highway Administration
- **August 30:** Federal Highway Trust Fund Expected to Become Insolvent
- **Fifteen Projects – \$70 M – Not Advertised**

House Resolution (H.R.) 5021

➤ **July 15:** House Approves Highway and Transportation Funding Act of 2014 (H.R. 5021)

- ✓ Extends Expenditure Authority 10 Months (through May 31, 2015)
- ✓ \$10.9 Billion Transferred
 - \$1 Billion transferred from the Leaking Underground Storage Tank Trust Fund
 - \$6.4 Billion from Pension Smoothing (General Fund)
 - \$3.5 Billion from Customs User Fees (General Fund)

Federal Highway Trust Fund

➤ **July ??:** Senate.....

✓ Three Proposals

1. House Bill

2. Senate Bill

3. Alternate Plan - December 2014

Federal Highway Trust Fund





Item 7

**Interstate Rehabilitation Program (IRP)
Connecting Arkansas Program (CAP)
State Aid City Street Program**

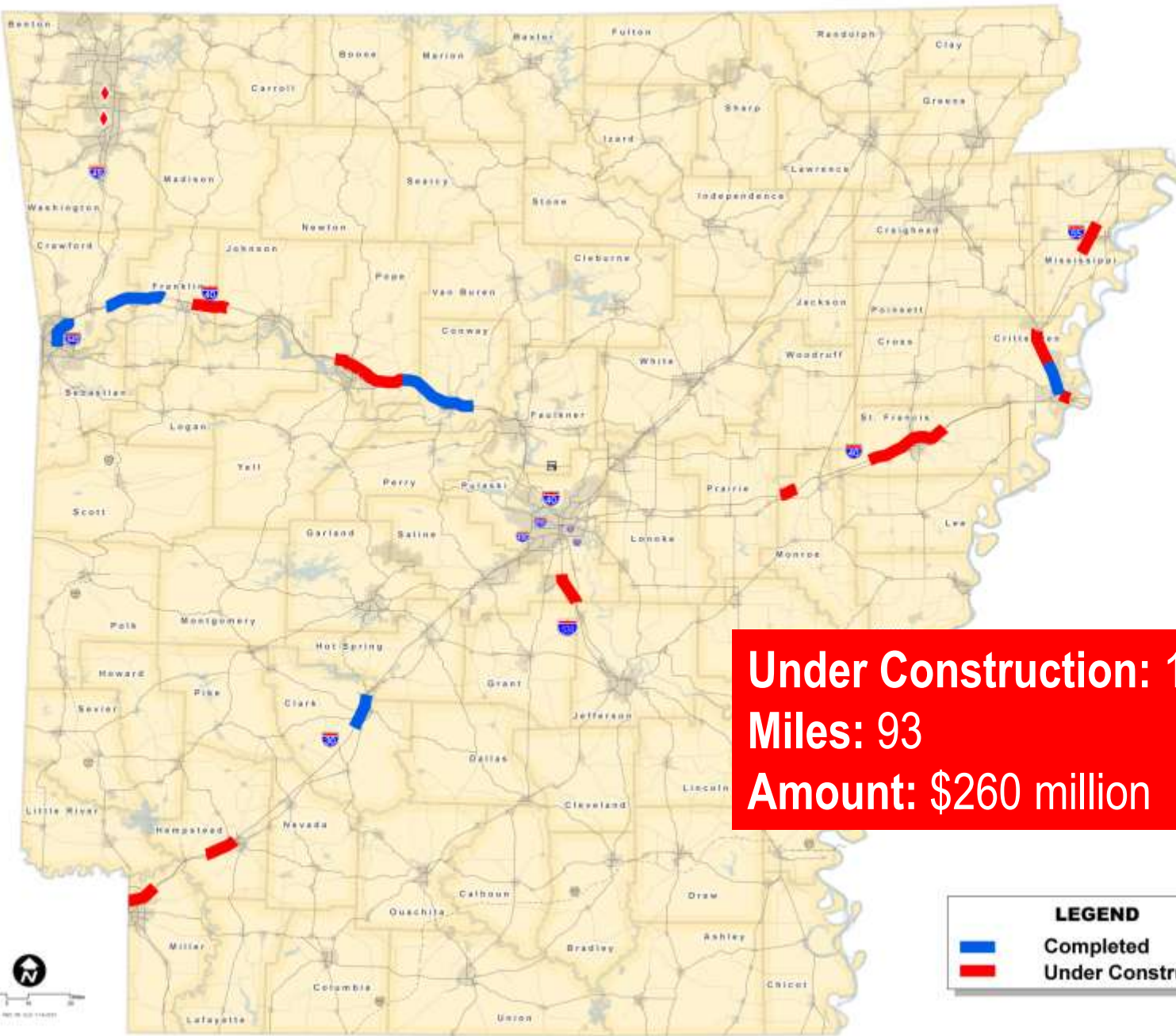


INTERSTATE
REHABILITATION
PROGRAM

IRP



Interstate Rehabilitation Program Job Status



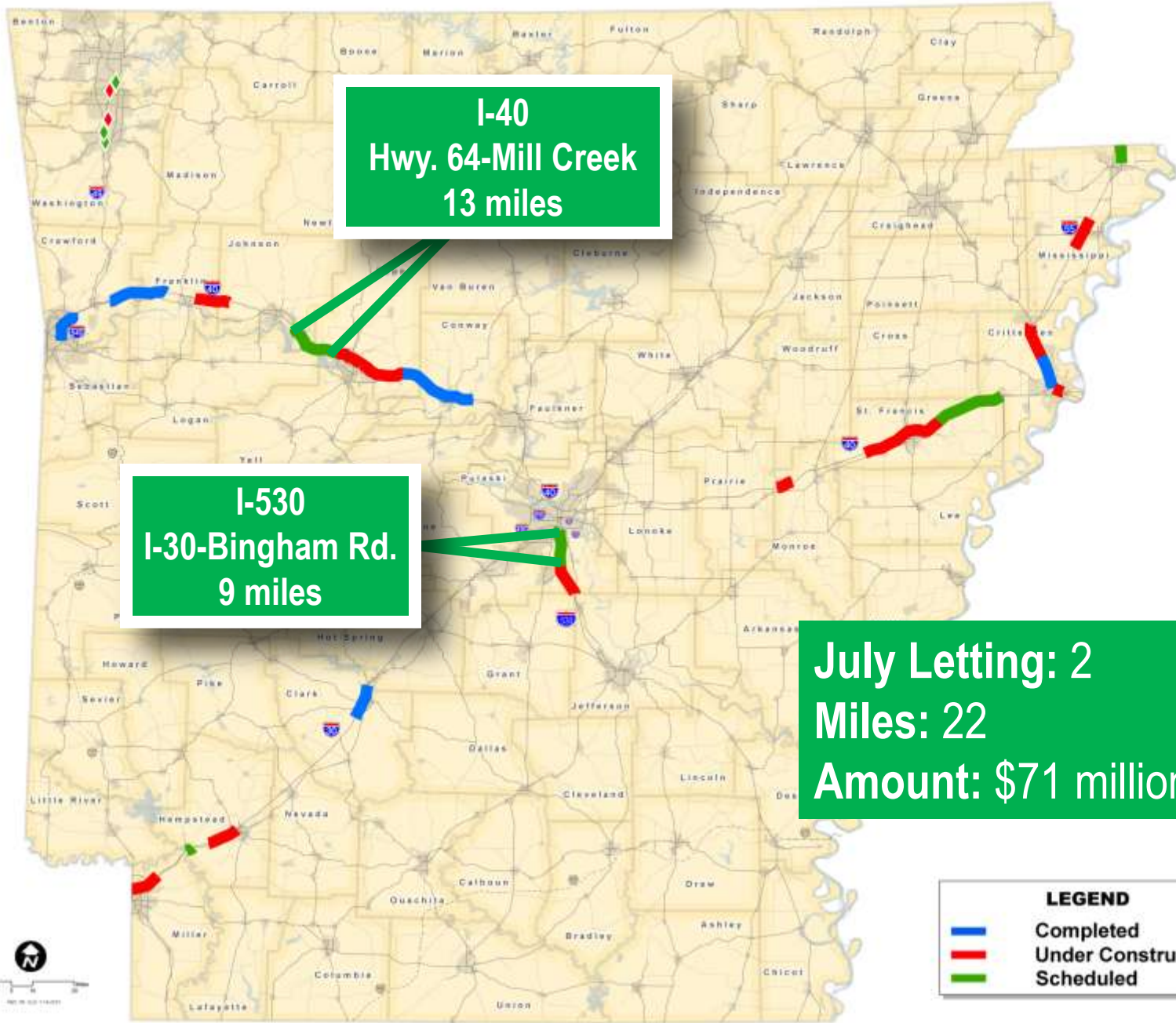
**Under Construction: 14
Miles: 93
Amount: \$260 million**

LEGEND

- Completed
- Under Construction

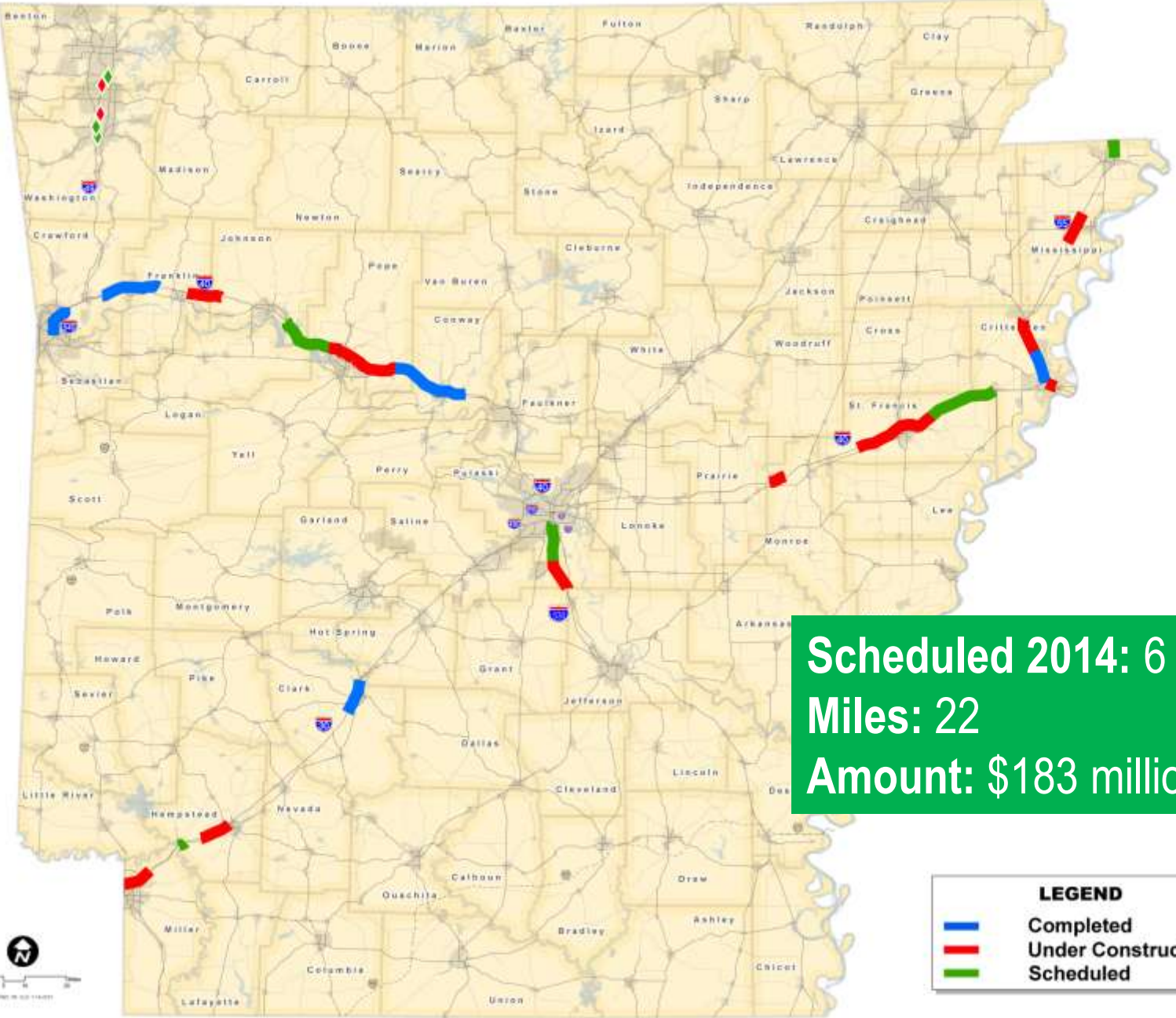


Interstate Rehabilitation Program
Job Status



Interstate Rehabilitation Program Job Status

**Scheduled 2014: 6
Miles: 22
Amount: \$183 million**



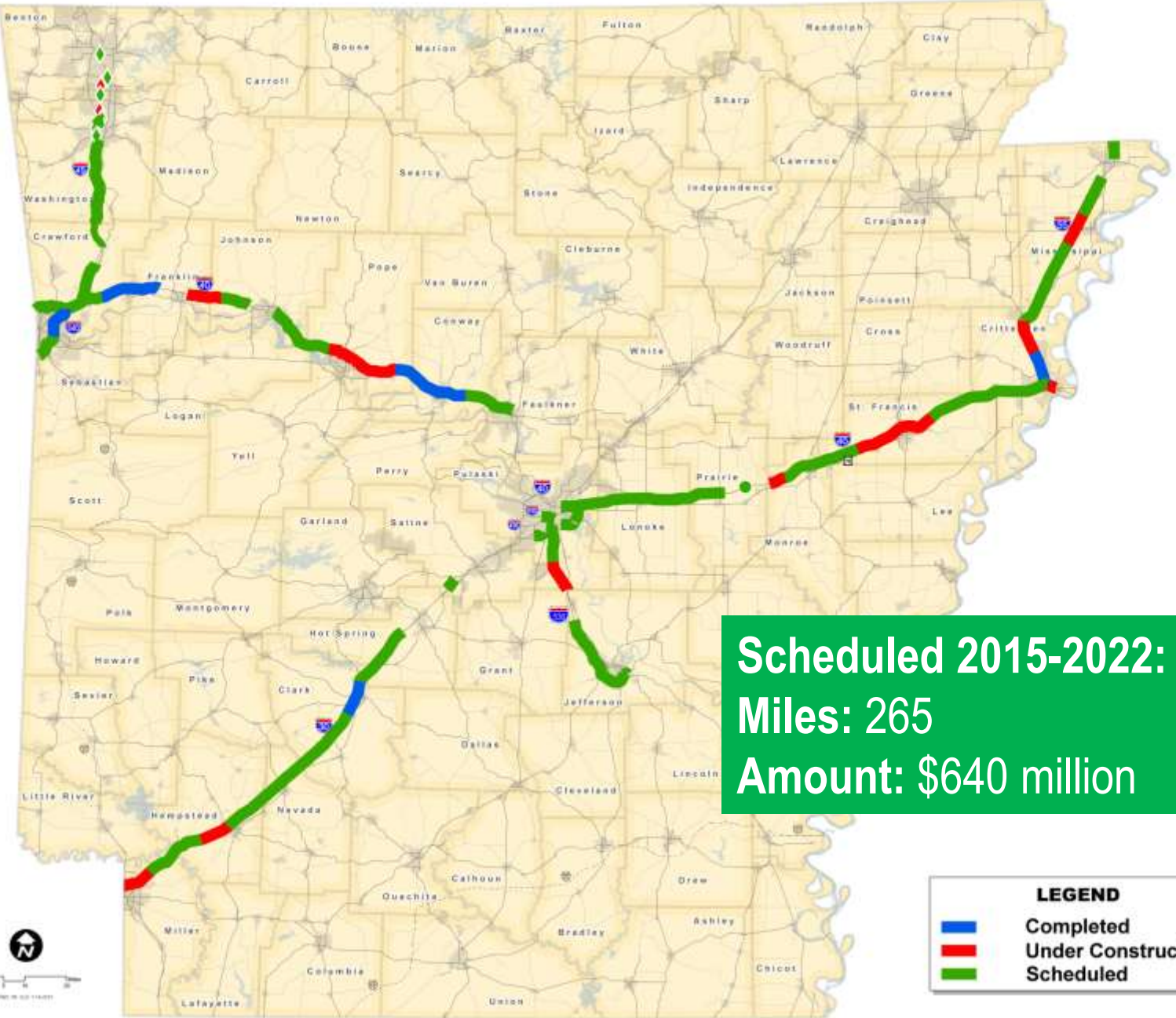
LEGEND

- Completed
- Under Construction
- Scheduled



Interstate Rehabilitation Program Job Status

Scheduled 2015-2022: 48
Miles: 265
Amount: \$640 million



LEGEND

- Completed
- Under Construction
- Scheduled





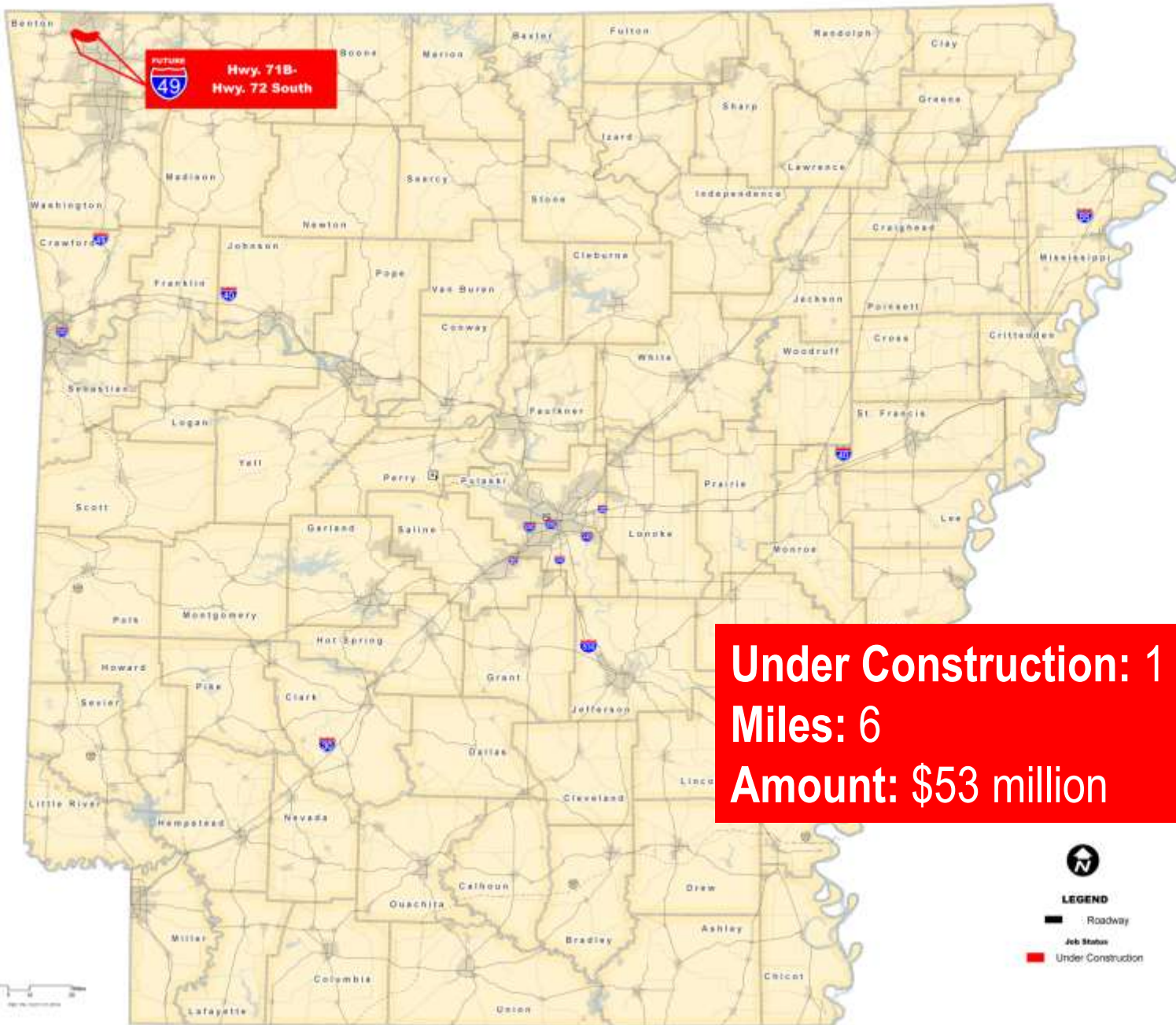
CONNECTING
ARKANSAS
PROGRAM

CAP



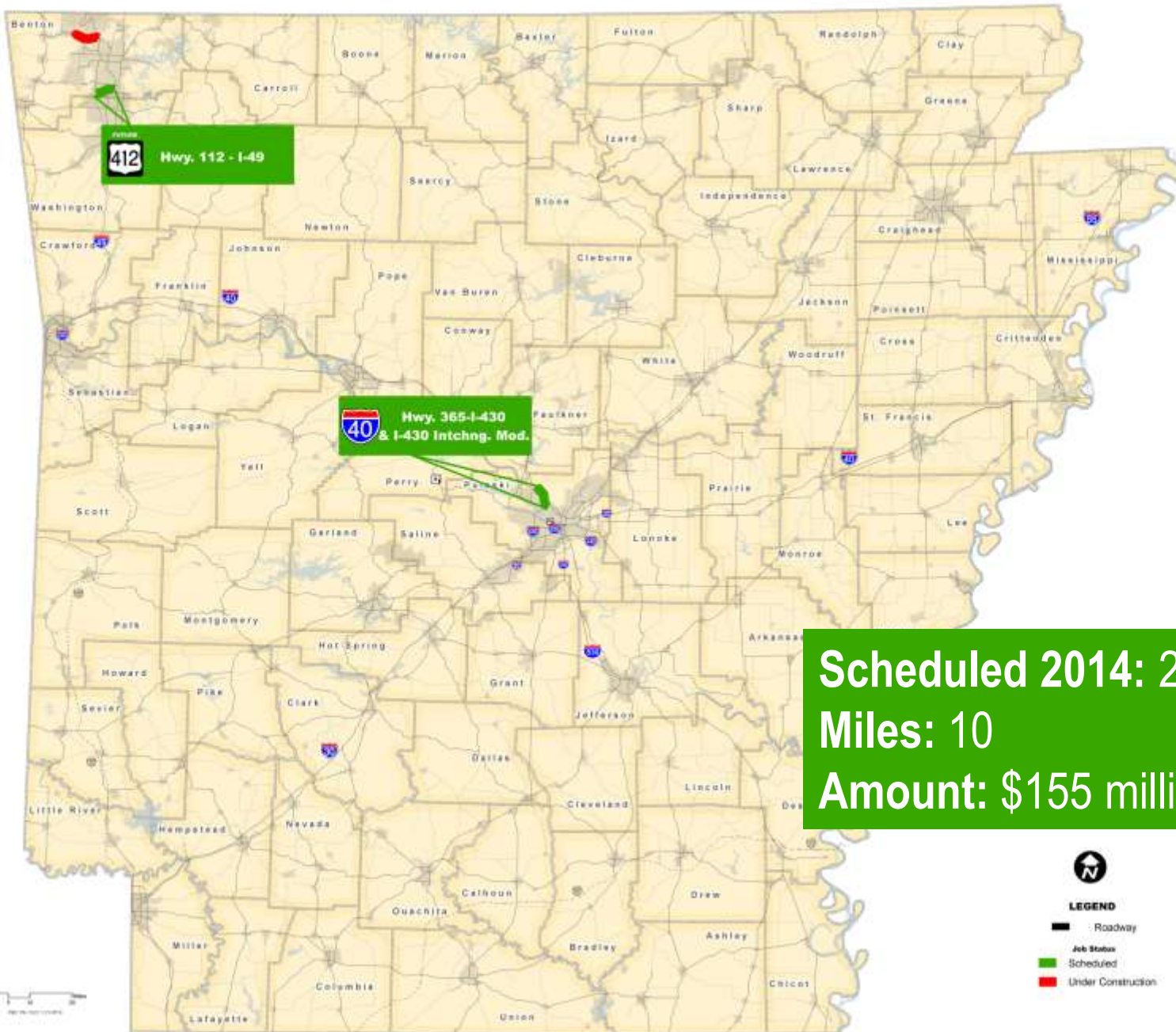
Connecting Arkansas Program

Under Construction



Connecting Arkansas Program

2014

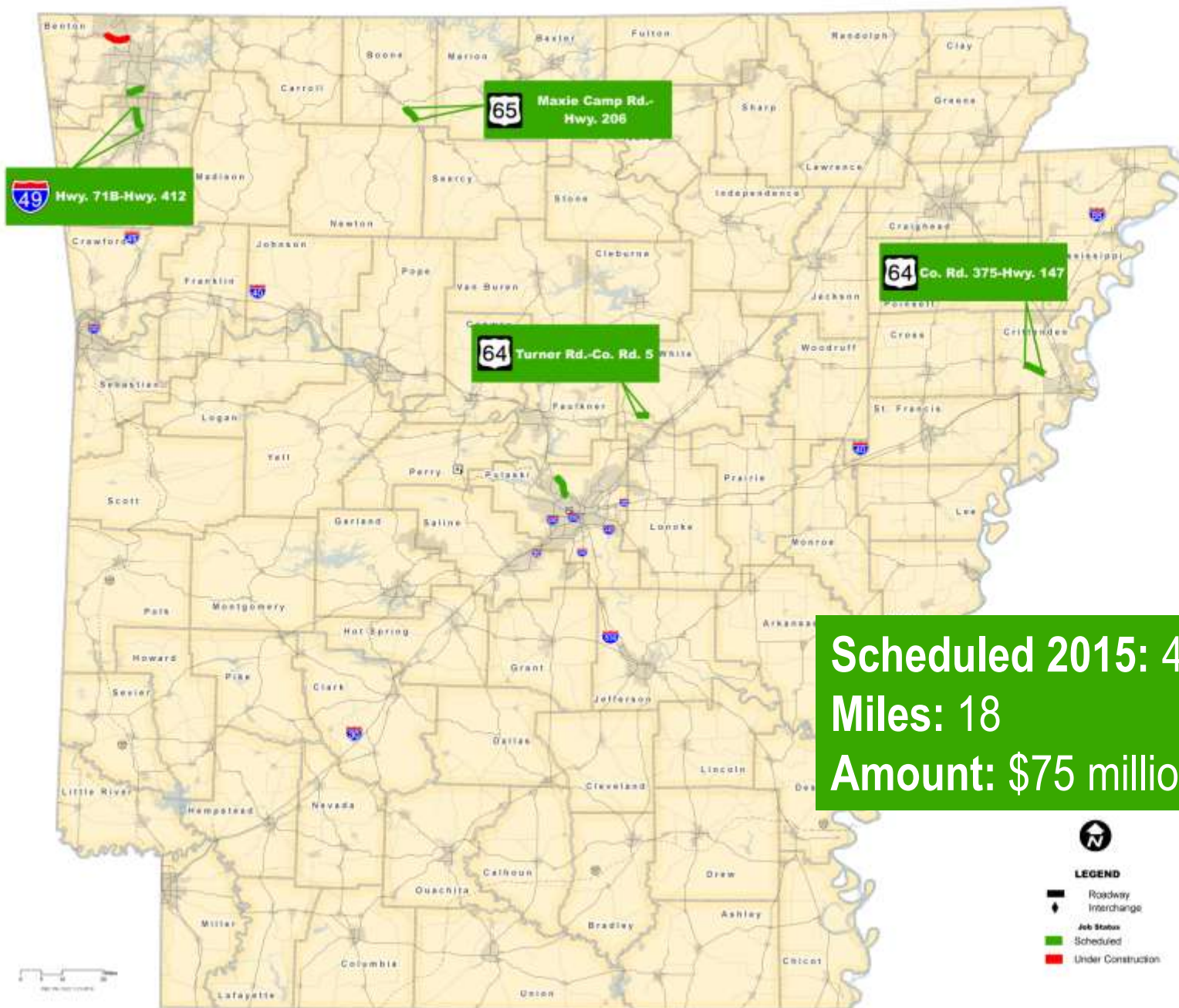


**Scheduled 2014: 2
Miles: 10
Amount: \$155 million**



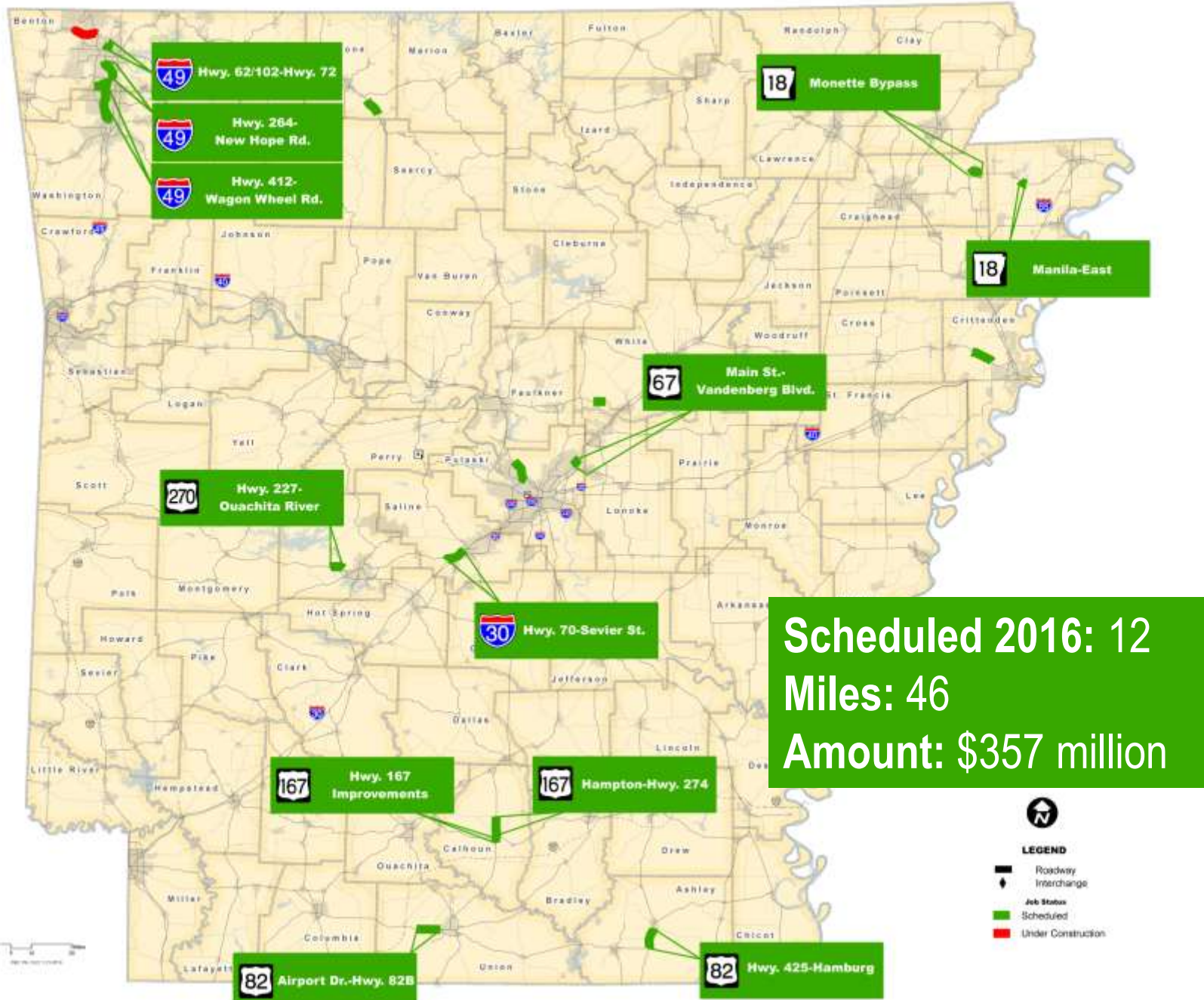
Connecting Arkansas Program

2015



Connecting Arkansas Program

2016

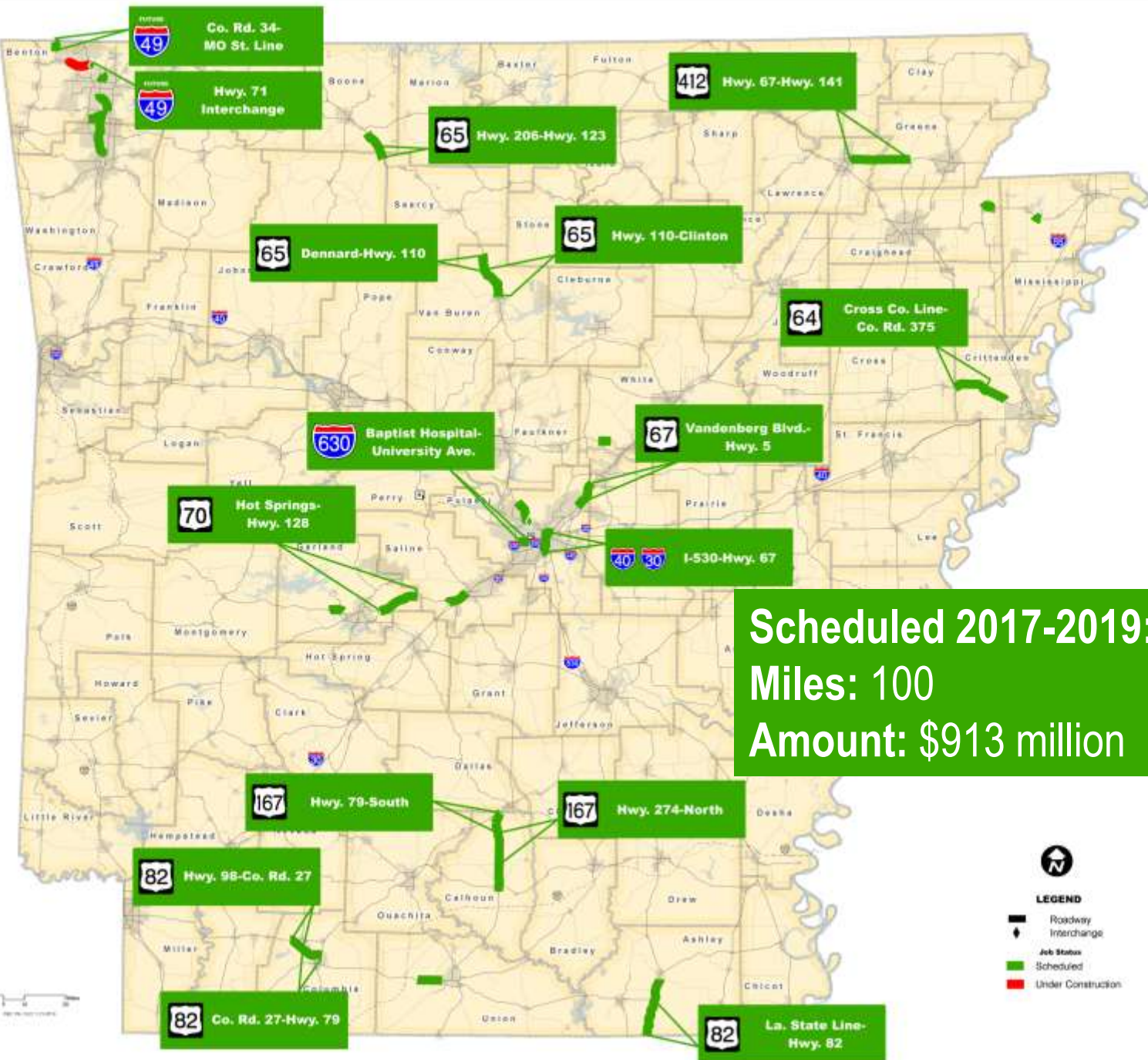


Scheduled 2016: 12
Miles: 46
Amount: \$357 million



Connecting Arkansas Program

2017-2019

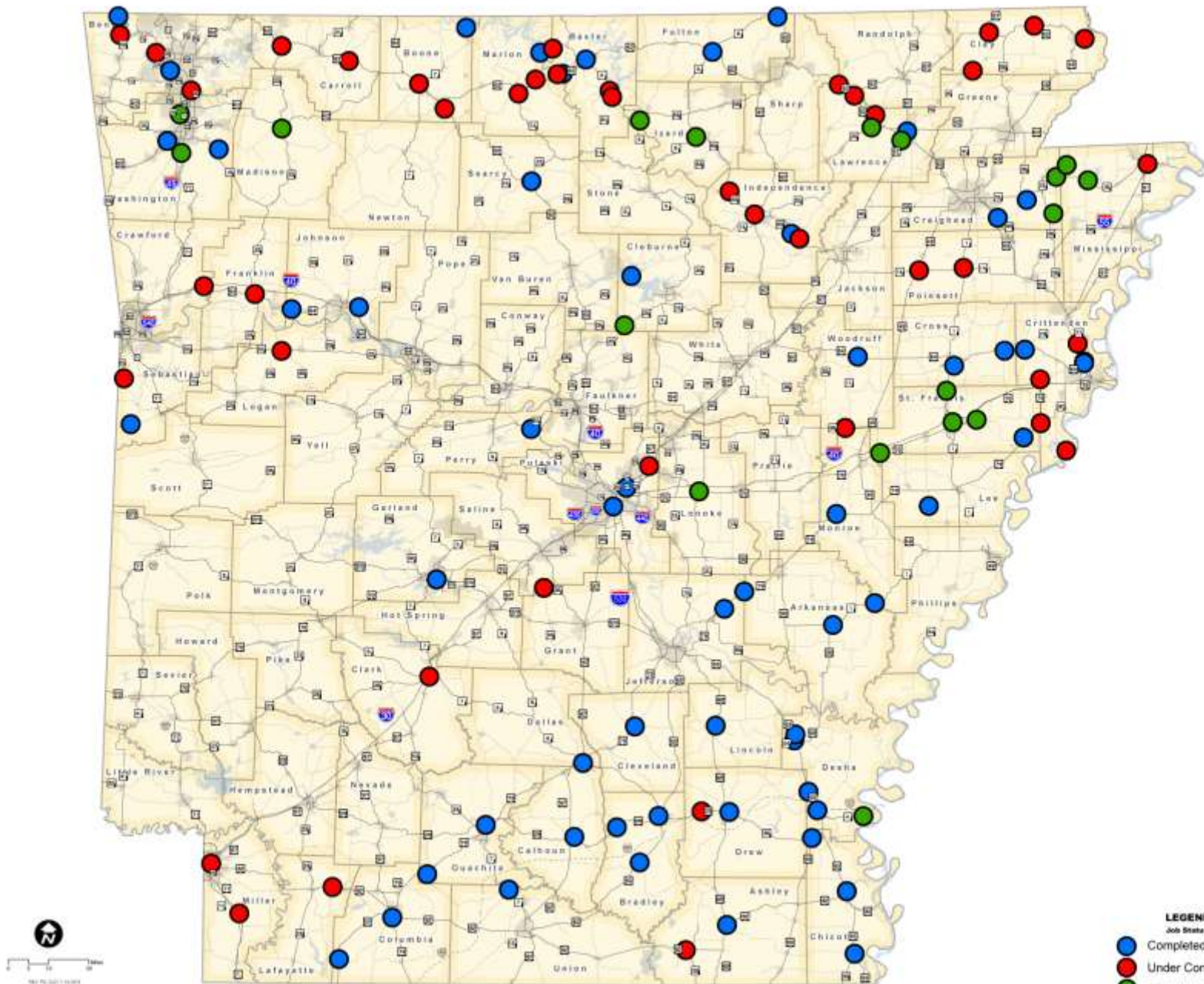




***State Aid
City Street Program***



State-Aid Street Program



The background features a large, faint, circular seal of the Arkansas State Highway Commission. The seal contains the text "ARKANSAS STATE HIGHWAY COMMISSION" around the perimeter and a central emblem with a star and other symbols.

Item 8
**Advertising for
Auctioneer Services**



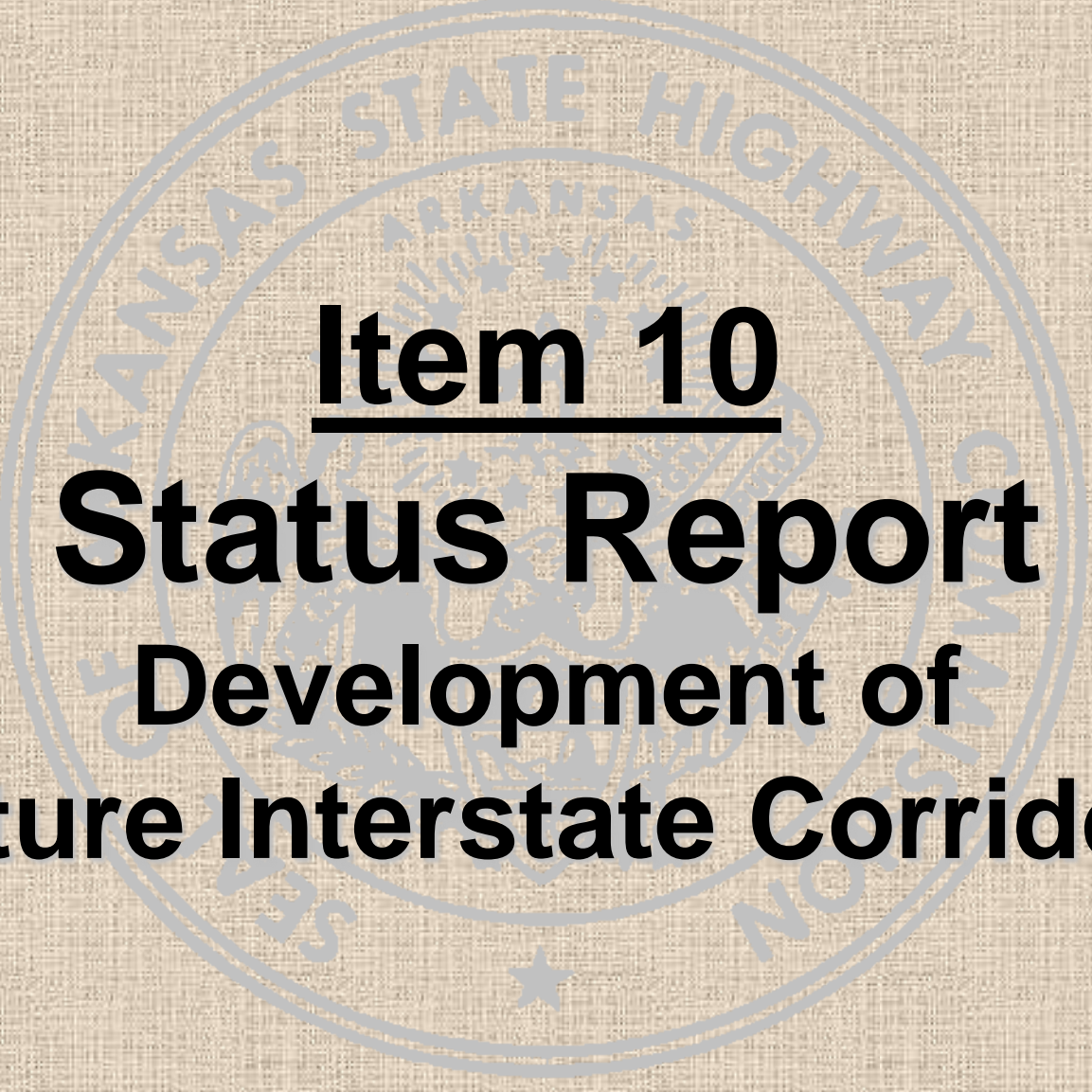
Item 9

**Use of General
Improvement Funds for
Purchase of Belly Plow**



New Belly Plow





Item 10
Status Report
Development of
Future Interstate Corridors

Status of Future Interstate Corridors in Arkansas







Louisiana State Line to Texas State Line



- Over 37 Miles Complete
- 4.5 Miles Under Construction
- Estimated Completion: Late 2014
- \$436 Million Total Cost
- I-49 Designation Upon Completion





Fort Chaffee Crossing



- **5.5 Miles Under Construction**
- **\$130 Million Total Cost**
- **Estimated Completion: Late 2014**
- **Future I-49 Designation Upon Completion**



Interstate 40 to Bentonville

- **I-40 to Fayetteville**
 - Completed in 1999
 - 41.9 Miles
 - \$460 Million
- **Fayetteville to Bentonville**
 - Completed in 1992
 - 30.9 Miles
 - \$143 Million





**FAYETTEVILLE-BENTONVILLE
WIDENING**
EST. COST: \$125 MILLION



**FAYETTEVILLE-BENTONVILLE
WIDENING & INTCHNG. IMPVTS.
2010-2016 STIPS**
EST. COST: \$100 MILLION



**FAYETTEVILLE-BENTONVILLE
INTERCHANGE IMPVTS.
2010-2016 STIPS**
EST. COST: \$100 MILLION



**Interstate 49 Corridor
Fayetteville to Bentonville
Improvements**

- CURRENT STATEWIDE TRANSPORTATION IMPROVEMENT PROGRAM (STIP)
- 2011 INTERSTATE REHABILITATION PROGRAM (IRP)
- CONNECTING ARKANSAS PROGRAM (CAP) (0.5% SALES TAX PROGRAM)

Fayetteville to Bentonville





Bella Vista Bypass



- PE, ROW & Utilities \$51 M
- 3.0 Miles Completed \$22 M
- 8.8 Miles Under Construction \$78 M
- 2.5 Miles Scheduled \$71 M
- Additional Lanes \$50 M
- Total \$272 M

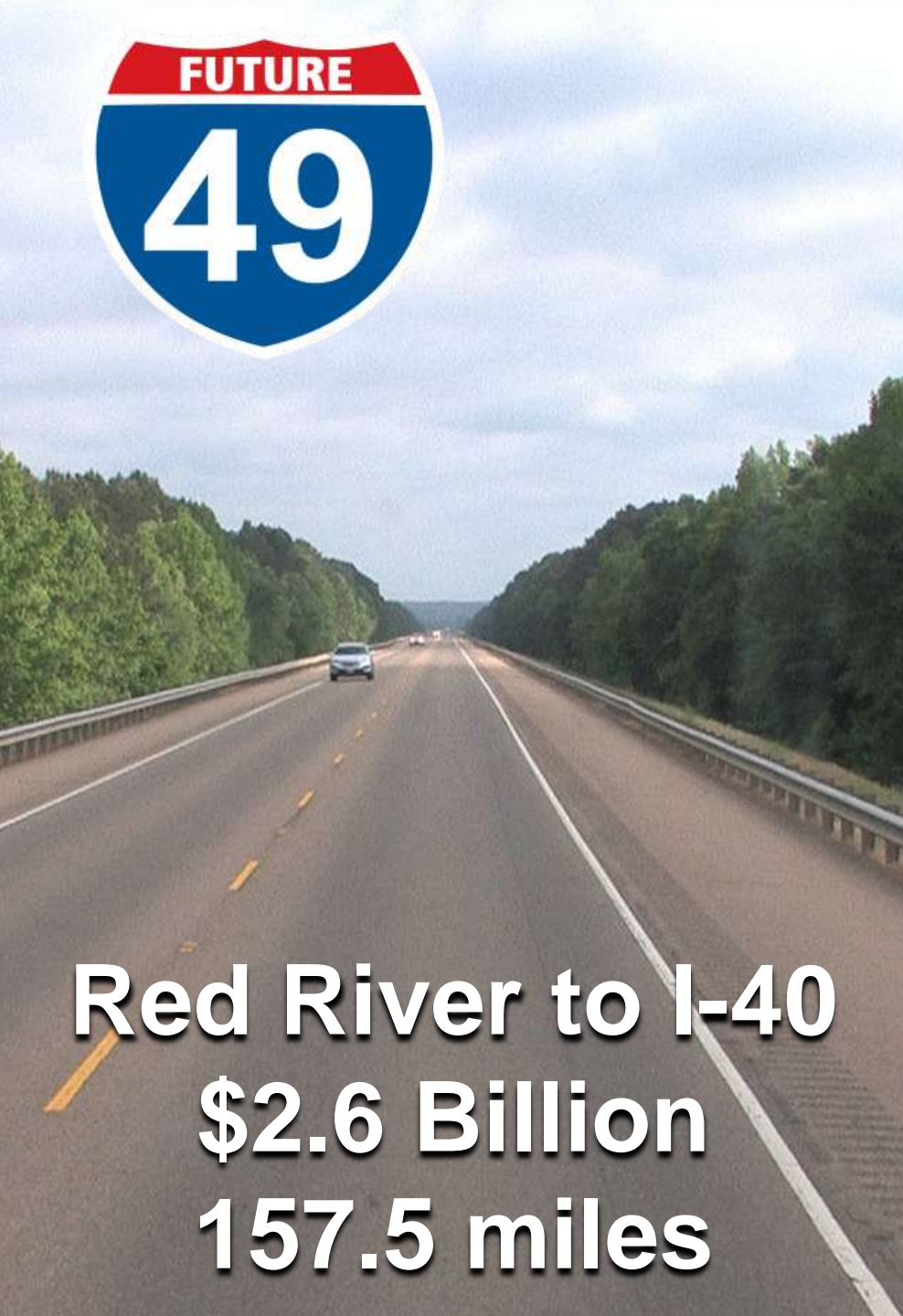
MISSOURI



- 2-lanes of Ultimate 4-lane Interstate
- Missouri Sales Tax Initiative
- Additional Lanes - \$50 M



Bella Vista Bypass



Red River to I-40
\$2.6 Billion
157.5 miles

I-49 Corridor
Texas State Line to Alma





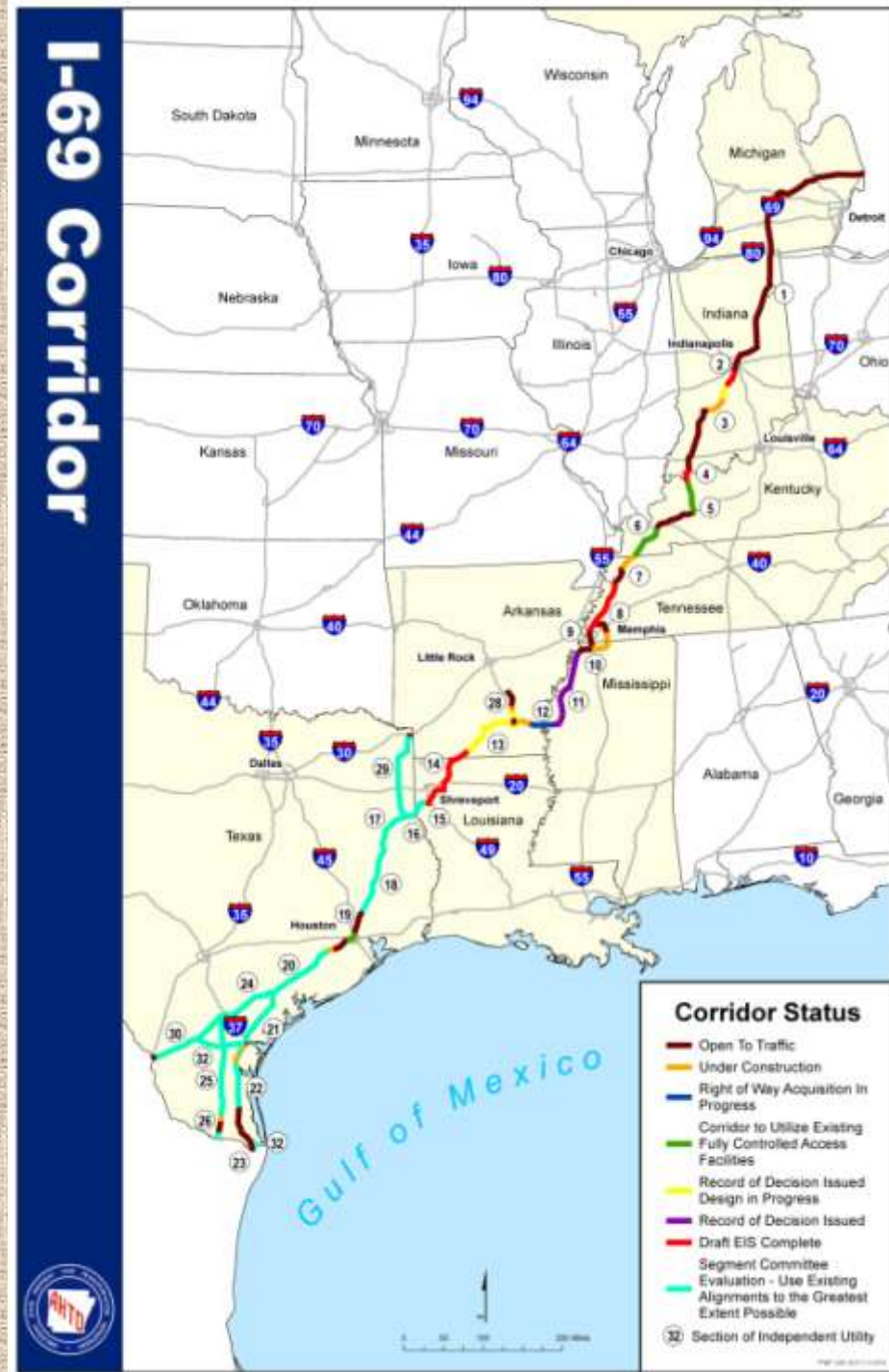
Funding Summary



Status	Miles	Total (millions)
Complete	113.5	\$ 1,155
Under Construction	18.8	\$ 166
Scheduled	2.5	\$ 71
Unfunded	157.5	\$ 2,624
Totals	292.3	\$ 4,016



- Canada to Mexico
- 2,730 miles
- Estimated Cost to Complete - \$30 Billion
- Congressionally Designated High Priority Corridors 18 & 20
- Includes the I-69 Connector





I-69 Corridor



LEGEND

- █ Completed
- █ Under Construction
- █ Scheduled
- █ Programmed
- █ I-69 Corridor



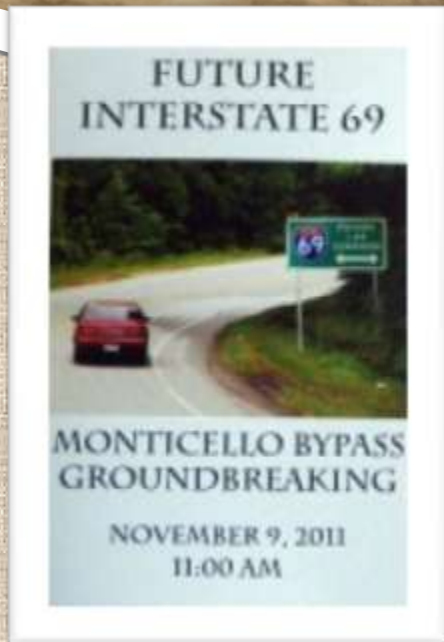


I-69 Connector

Funding Summary



Status	Miles	Total (millions)
Complete	22.5	\$ 140
Under Construction	6.5	\$ 35
Scheduled	2.8	\$ 14
Unfunded	10.5	\$ 520
Totals	42.3	\$ 709



Monticello Bypass

I-69 Great River Bridge



- Design Complete
- Estimated Cost - \$1.3 Billion
 - Arkansas' Portion - \$910 Million
- ROW Acquisition Underway



I-69 Funding Summary



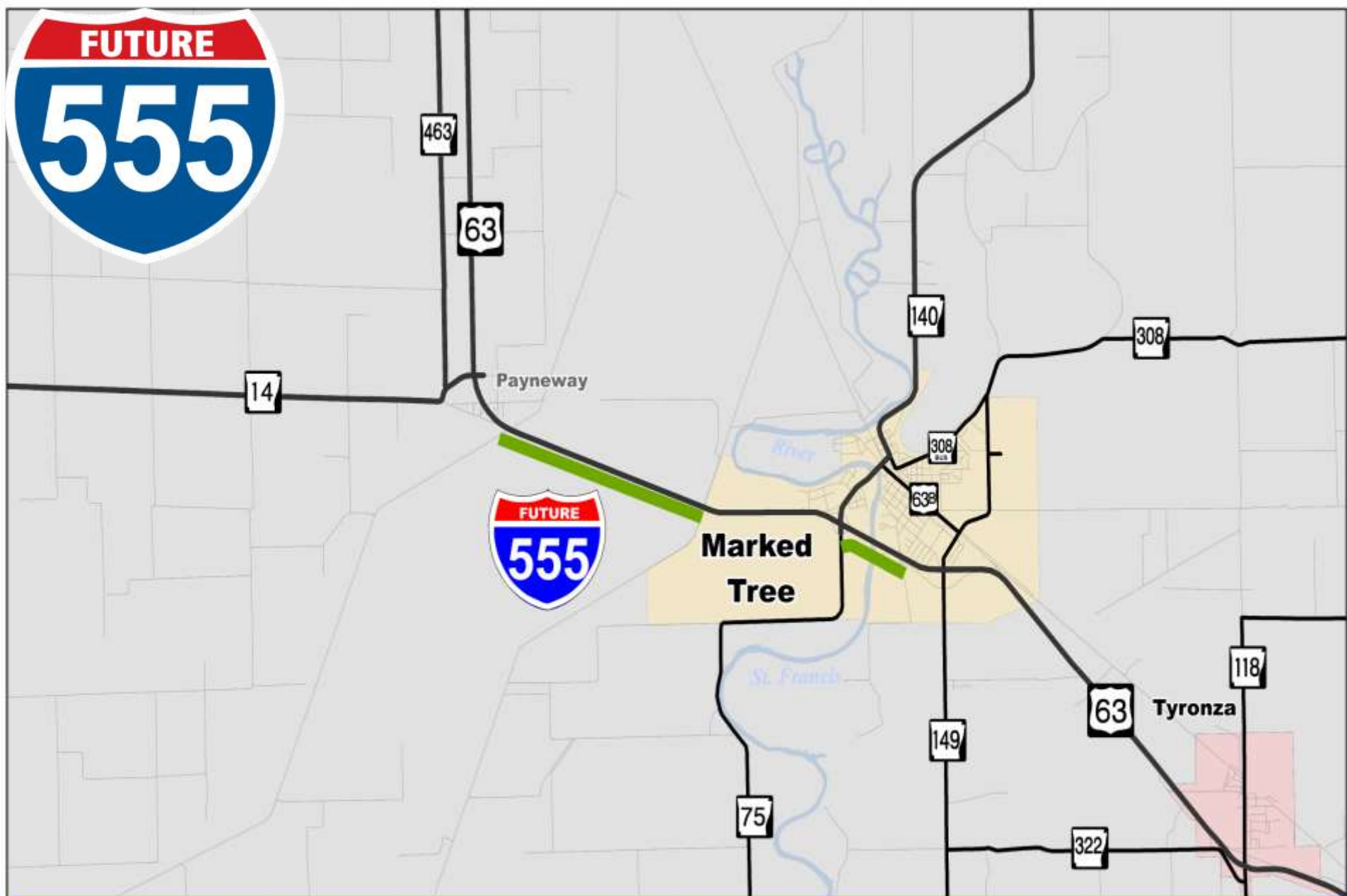
Status	Miles	Total (millions)
Complete	-	-
Under Construction	8.5	\$ 13
Scheduled	11.3	\$ 79
Unfunded	122.0	\$ 2,980
Totals	141.8	\$ 3,072



Highway 63/Future I-555
 Craighead, Poinsett & Crittenden Counties
 Districts 1 & 10



MO DOT 2018

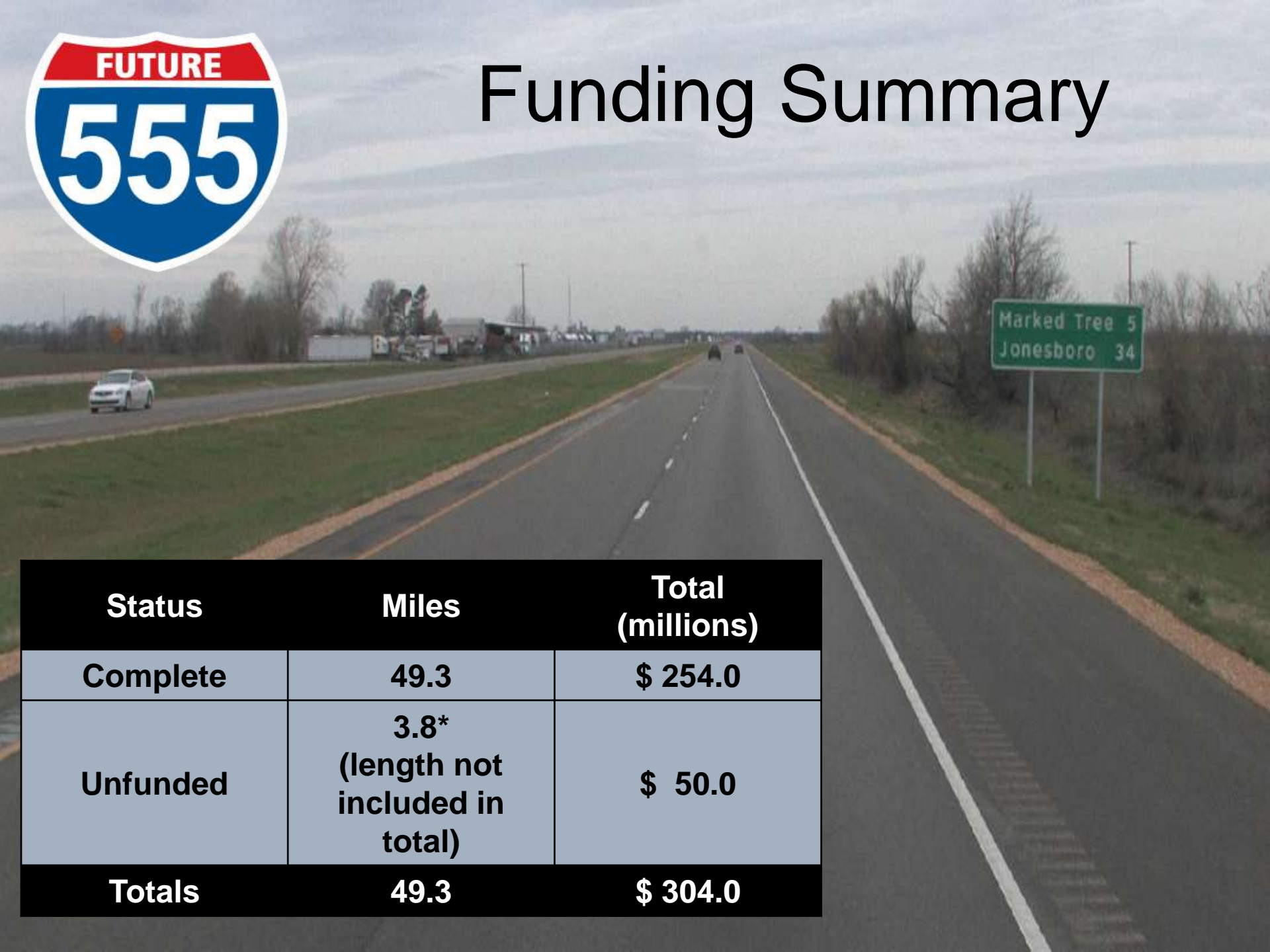


Highway 63/Future I-555
 Poinsett County
 District 10





Funding Summary



Status	Miles	Total (millions)
Complete	49.3	\$ 254.0
Unfunded	3.8* (length not included in total)	\$ 50.0
Totals	49.3	\$ 304.0



Future Interstates of Arkansas

Future Interstate	Remaining Unfunded (x \$1 M)
Interstate 49	\$2,700
Interstate 69	3,500
Interstate 555	50
TOTAL	\$6,250

The background features a large, faint, circular seal of the Arkansas State Highway Commission. The seal contains the text "ARKANSAS STATE HIGHWAY COMMISSION" around the perimeter and a central emblem with a star and other symbols.

Item 11

Update

Implementation of Intelligent Transportation Systems

Intelligent Transportation Systems (ITS)

Traffic Management Center (TMC)



- Collect and Disseminate Traffic Information
- Monitor and Operate ITS Devices
- Coordinate with Other Agencies
- Could serve as Statewide Emergency Operations Center

Intelligent Transportation Systems (ITS)

- Traffic Management Center (TMC)
 - Several possible sites to locate a TMC under review:
 - ✓ Central Office Complex
 - ✓ Sign Shop Complex
 - ✓ District 6 Complex
 - ✓ Off Site
 - *May be impacted by the architectural / engineering assessment of the Central Office*
 - Recommend Design by Consultant

Intelligent Transportation Systems (ITS)

Road Weather Information Systems (RWIS)



- Collects Real Time Weather Information
- Placed at Strategic Locations
- Data Collected:
 - ✓ Air Temperature
 - ✓ Wind Speed & Direction
 - ✓ Precipitation Type
 - ✓ Visibility & Fog Detection
 - ✓ Relative Humidity
 - ✓ Pavement Surface Temperature and Condition (Wet, Dry, Frozen)
 - ✓ Subgrade Temperature
- Management Can Use RWIS Data for Winter Weather Treatment Plans

Intelligent Transportation Systems (ITS)

Highway Advisory Radios

- Disseminate more detailed information than Dynamic Message Sign:
 - ✓ Cause of traffic problem
 - ✓ Advise Alternate Routes
 - ✓ Expected Length of Delay
 - ✓ Morgan Nick/AMBER Alerts with detailed information



Intelligent Transportation Systems (ITS)

Traffic Cameras



- Observe traffic flows
- Used in conjunction with traffic monitoring to verify incidents effecting traffic flow
- Incident Management
- Monitored from TMC
- Public access via web (view only)
- Pan/Tilt/Zoom access for other agencies

Intelligent Transportation Systems (ITS)

Dynamic Message Signs


- Installed in Strategic Locations
- Can be used to Display:
 - ✓ Travel Times
 - ✓ Traffic Advisories
 - Unplanned Incidents
 - Maintenance or Construction Activities
 - ✓ Weather Advisories/Alerts
 - ✓ Morgan Nick/AMBER Alerts



Intelligent Transportation Systems (ITS)

Interstate Construction Projects

- September IRP Projects – ITS Devices Included
- Statewide Automated Workzone Information System
 - ✓ Multiple Interstate Projects Planned and Active – One Contract
 - ✓ Design by Consultant
 - ✓ The Consultant should also evaluate the individual Work Zone ITS elements to determine if they could be retained for use as a part of the permanent ITS Architecture

The background features a large, faint, circular seal of the Arkansas State Highway Commission. The seal contains the text "ARKANSAS STATE HIGHWAY COMMISSION" around the perimeter and a central emblem with a star and the word "ARKANSAS".

Item 12 Results



Toll Feasibility Study



Interstate 40 Toll

Feasibility Study



Executive Summary
May 2014



Toll Feasibility Study

Project Goals



- Determine feasibility of using tolls to finance the widening of Interstate 40 from four to six lanes between North Little Rock and West Memphis, a distance of 110 miles.

Project Deliverables

- Assessment of various tolling concepts and collection systems;
- Evaluation of toll traffic and revenue amounts;
- Preparation of estimates for toll system operations and construction costs; and
- Analysis of roadway and economic impacts and the financial feasibility of tolling.



Toll Feasibility Study



Tolling Concepts and Collection Systems

- **Tolling Concepts:**

- No Tolling
- Three Mainline Tolling Points (East, Center, and West)
- Tolling All Movements (All Ramps)
- Two Mainline Tolling Points (East and West)

- **Tolling Collection Systems:**

- Cash Only
- Video Only
- Open Road Tolling (Transponder, Video and Cash)
- All Electronic Tolling (Transponder and Video)



Toll Feasibility Study



Estimates of Toll Traffic and Revenue

Alternative		Annual Toll Transactions (x 1,000,000)		Annual Gross Toll Revenue (x \$1,000,000)	
		Low	High	Low	High
Tolling All 3 Lanes	Three Mainline Tolling Points (East, Center, and West)	31	19	\$50	\$201
	Tolling All Movements (All Ramps)	28	17	\$50	\$188
	Two Mainline and Nearby Ramps Tolling Points (East and West)	10	8	\$50	\$242
	Three Mainline and Nearby Ramps Tolling Points (East, Center, and West)	20	13	\$47	\$188
3rd Lane Only	Express Lane - Multiple Mainline Tolling Points (Both Directions)	12	3	\$3	\$4

Passenger Vehicle Toll Rate Per Mile

Low - 5 ¢

High - 15 ¢

Truck Toll Rate Per Mile

Low - 5 ¢

High - 50 ¢



Toll Feasibility Study



Capital Costs and Operating Expenses

- **Capital Costs for Widening:**
 - Separated Third Tolled Lane - \$ 770 million
 - All Lanes Tolled - \$ 700 million
- **Toll Related Capital Costs:** - \$13 million to \$263 million
- **Toll Related Operations and Maintenance Costs:** - \$185 million to \$1,195 million

Most Feasible Concept and Collection System Identified



- Toll All Lanes with Three Collection Points
- Open Road Tolling (Transponder, Video and Cash)
- All Electronic Tolling (Transponder and Video)
- Toll Rate - Passenger Vehicle – 9¢ per mile / Trucks – 27¢ per mile

Financial Results – Best Case Scenarios

Assumptions:
Bonds Issued - 2016, 2019
Toll Revenue Start - 2021
Bonds Paid - 2046

	Open Road Tolling	All Electronic Tolling
Total Bonds Issued	\$1.08 Billion	\$1.05 Billion
Total Capital Financed	\$774 Million	\$716 Million
Interest Rates on Bonds	5.2%-6.5%	5.2% – 6.5%
Gross Revenue 2021-2046	\$5.628 Billion	\$4.893 Billion
Less Routine O&M	(\$446 Million)	(\$453 Million)
Less Debt Service	(\$2.656 Billion)	(\$2.509 Billion)
Less I-40 Renewal & Replacement	(\$521 Million)	(\$482 Million)
Less Hwy 70 & 64 Impact Mitigation Costs	(\$642 Million)	(\$642 Million)
Excess Revenues	\$1.363 Billion	\$807 Million



Toll Feasibility Study



Summary

“The critical element to make this viable is that all lanes must be tolled including the existing lanes”

- Develop support for the project
- Remove the prohibition on video data collection along the toll road
- Support future federal transportation legislation to remove the prohibition on Interstate tolling
- Add additional opportunities to toll existing Interstates or gain access to the existing pilot project slots
- Investment grade study (additional and more detailed financial analyses)



Item 13

Consultant Selection

Endangered Bat Study



Washington & Crawford Co.

Job # 040128

The background features a large, faint, circular seal of the Arkansas State Highway Commission. The seal contains the text "ARKANSAS STATE HIGHWAY COMMISSION" around the perimeter and "ARKANSAS" in the center. In the center of the seal is a smaller emblem with a shield and a star.

Item 14
**Other Business &
Discussion**



Arkansas State Highway Commission Meeting

Wednesday, July 23, 2014